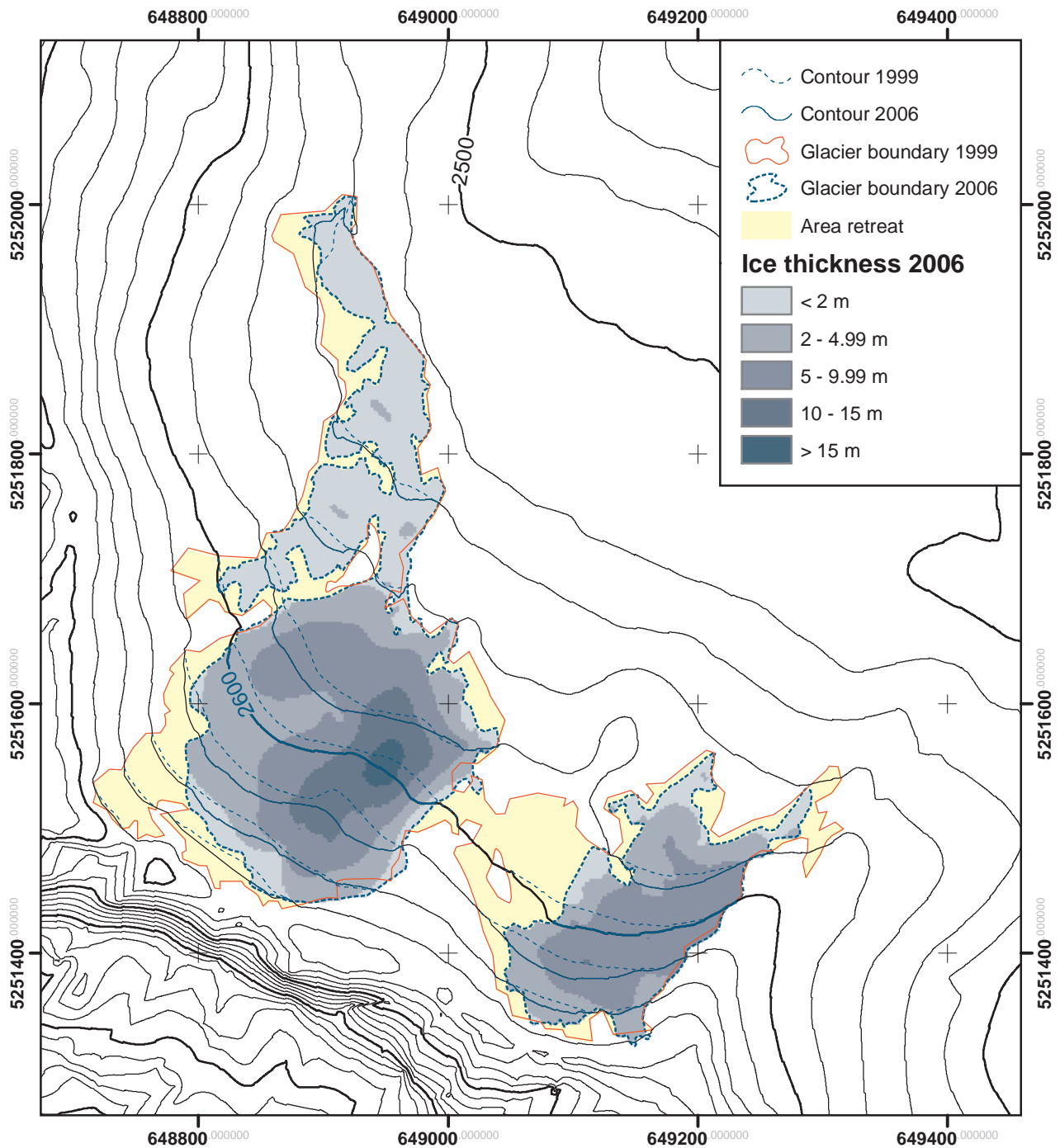


Südlicher Schneeferner 1999-2006



1:5000

Based on photogrammetric analysis of aerial photos from 1999 (C.Steglich) and airborne laser scanning in November 2006 (Bavarian Office for Surveying and Geoinformation, ©LVG).
Ice thickness determined on 11 November 2006 by radio sounding (W. Hagg, C. Mayer, S. Rudolph)
Processing and Cartography: W. Hagg, C. Mayer
Coordinate System: UTM, Zone 32 N
www.bayerische-gletscher.de